

Concord Integrated Preschool Playground Initiative

Rotary Club, 7 and 16 February 2017



CIPS Parent Group

CIPS Program

- Started with 1 classroom in 2001; now at 6 classrooms
- All integrated – 50% sped students, 50% community peers
- One classroom has additional ½ day for children with great needs
- Services included speech therapy, occupational therapy, physical therapy, applied behavior analysis, social skills groups
- Sped students – autism, downs syndrome, cerebral palsy, neurological issues, sensory processing disorders, delayed development
- Dedicated and experienced staff, robust program, highly respected



Proposed Vision

- Well planned playground that compliments the Playscape at Ripley
- ADA compliant, therapeutic and structured playground environment for younger children and for community use
- Will serve children of varying abilities and interests
- Multiple therapeutic uses for Occupational therapy, Physical therapy and other specialties

Fencing and Shade

- Fencing needed for age of children and proximity to parking lot
- Designed to be embracing, inviting and practical:
 - Play and musical panels on playground side, carving of animals on outside
 - Picket fence for visibility and natural feel
 - Willow fence internally to provide structured areas for children
- Shade Trees
 - Use of tall narrow maples
- Additional Umbrella's in trike/sandbox/seating area



Equipment Selection

- Beyond ADA compliant
- Equipment selected for therapeutic use in addition to play:
 - Balance beams (for sensory input and balance)
 - Steps and ramps (work on alternating feet when learning to climb stairs)
 - Pull up bars (helps promote upper extremity, hand and core strength)
 - Roller slide to provide sensory feedback
 - Rock back and forth ride-on equipment with seat belts (promotes core strength, sitting balance and vestibular input)
 - Climbing walls and other challenges to develop shoulder and upper body strength
 - Crawl tubes (helps with gait improvement and muscle strength)
 - Stationary panels, both musical and interactive play for children with mobility issues
 - Outdoor blocks for building and heavy work
 - Play houses
 - Trike pathways
 - Merry go round for vestibular movement and chair-like swing (use of the Playscape equipment)



Equipment

Large Play Structure



Roller Slide



Equipment- Continued

We-Saw



Whirlin-Robin



Equipment- Continued

Log Steps



Log Climber



Equipment- Continued

Play Panel

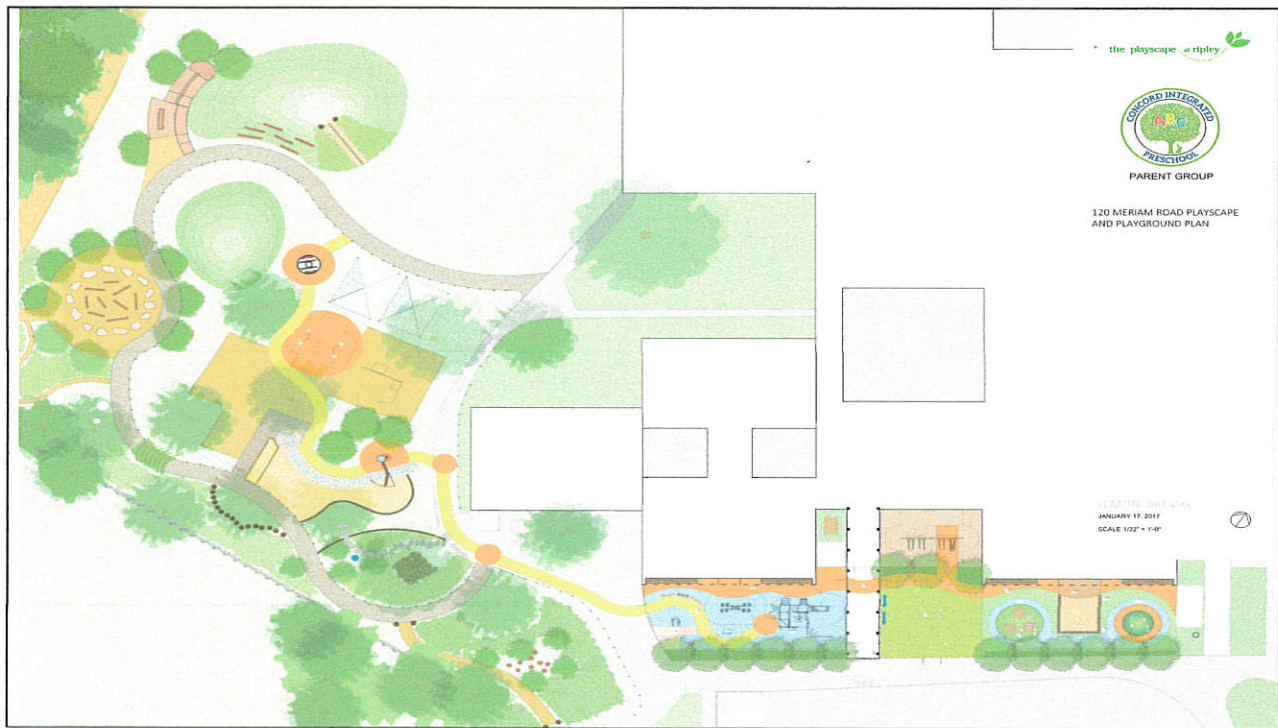


Buddy Bench



Surface

- Poured rubber with impact attenuation layer in areas with high equipment (designed to ASTM and certified by IPEMA)
- Widely used in new and ADA accessible playgrounds (Rideout, SMILE)
- Requires little maintenance
- Pathway with different color painted surface through all 3 plays areas and to connect with Playscape accessible equipment



Project Supporters

- CPS Administration
- Town & Assistant Town Manager
- Concord-Carlisle SEPAC
- Minute Man Arc Early Intervention
- First Connections
- Center for Parents and Teachers
- Town Recreation Commission
- Friends of the Playscape at Ripley
- Concord Children's Center – Fiscal sponsor
- Town Committee on Disability
- Healthy Concord
- CASE Collaborative
- Concord Recreation Department
- Ongoing Community Outreach events

Funding

Goal: \$360,000

Raised to Date: \$210,500; \$180,000 committed Pending Town Meeting Approval

Public/Town:

- **Town of Concord/Concord Public School Facility & Capital Budget (FY2018):** \$75,000 (Pending Town Meeting approval)
- **Community Preservation Act Funding (FY2018):** \$105,000 (Town Meeting approval)

Grants: An ongoing process and several grants are under preparation

- CHNA 15 Capacity Building Grant - \$2,000 grant for web development and community outreach.
- Salem Five Charitable Foundation - \$ 500 (granted)
- Whole Foods 5% Give Back Day (granted) February 28th at the Bedford Store
- Cambridge Savings Bank Foundation (submitted)
- Middlesex Savings Bank (submitted)
- First Parish of Concord (submitted)
- Family Foundations (submitted)
- Concord Carlisle Community Chest Cornerstone Grant (in process)

Local Business & Private Individuals: *These efforts have just begun in earnest, as they were pending town investment.

- ADS Ventures, Inc. \$2,000
- Private Individuals: \$26,000

Partnerships

- **Concord Children's Center:** CCC is acting as our fiscal sponsor until the Parent Group's 501c3 status is processed by the IRS.
- **Concord Recreation Department:** The Rec Department will manage the bid, procurement and construction of the project.
- **The Rotary Club of Concord:** The Rotary Club will partner with us on in-kind donation as well as our community build day. Additionally, the Rotary Club is donating the proceeds of their annual Pops Night event in April to the project. THANK YOU!!

Rotary Club – In Kind

- Possible paint of surface in Area 3 (Trike Path) using playground surface paint (to reduce cost of installing rubber surface)
- Custom build of buddy benches (x 2)
- Custom build or assemble storage boxes/benches (x 16)
- Custom build or assemble storage shed for trikes
- Planting of ground cover
- Bark mulch spreading in landscape areas
- Painting of walk way surface
- Prepare and fit leaf shapes to front fencing
- Remove and dispose (recycle) old play equipment - little tykes structure, balance beam, play houses, etc.

Timeline

- Design bid package completed
- Bid documents with Concord Recreation Department are finalized
- Private fundraising under way
- Fundraising event with the Rotary Club of Concord to be held in April
- Public finding to be approved at Town Meeting – April 24
- Construction to start end July 2017